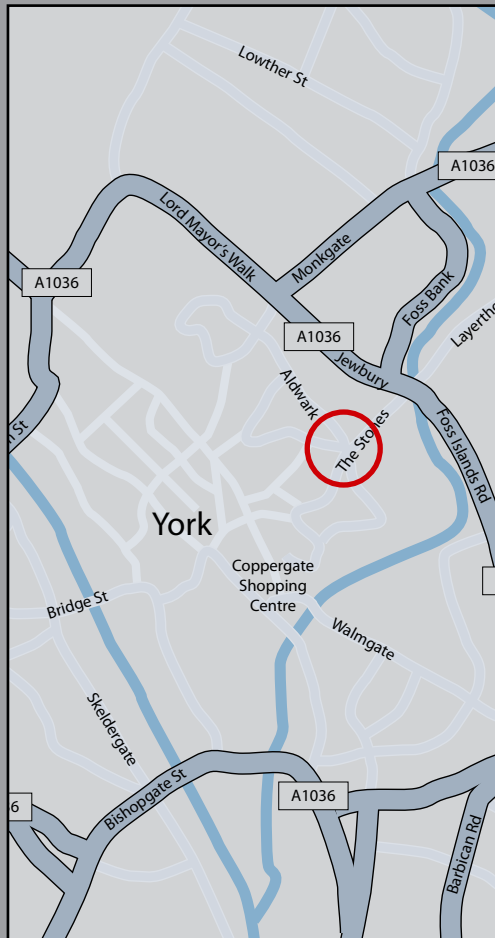


# Peasholme Court

Stonebow • York



# Peasholme Court, Stonebow, York



## Description

- An exclusive development of 4 prestigious town houses with parking
- Each individually designed combining a contemporary style for the modern lifestyle
- Spacious and generous accommodation arranged over 4 floors
- Designed to the highest standard offering superb quality throughout
- Contemporary kitchens, bathrooms and high quality fixtures and fittings

## Location

- Peasholme Court occupies an enviable location offering a range of excellent local amenities including restaurants, shops, post office, supermarket and pubs.

## Specification - Property

- Zurich guarantee
- Timber frame construction
- Designed and built to be energy efficient

- Natural materials used internally and externally
- Carpet to reception rooms and bedrooms
- Recessed lighting throughout
- Double glazed
- Off street parking

## Specification - Kitchen

- Kitchens by leading York specialist Scammell Interiors
- Granite work-tops with integrated appliances
- Siemens cooking appliances with an induction hob
- Separate refrigerator and freezer
- Double oven and dishwasher
- Wine and drinks chiller
- Slate floor tiles

## Specification - Bathroom

- Floor to ceiling natural stone tiles
- Whirlpool baths
- Contemporary star shaped fixed shower head
- Matching bath and basin designer taps
- Heated towel rail

## Specification - En suite

- Floor to ceiling natural stone tiles
- Matching bath and basin designer taps
- Modern, sculptured design shower tower with large fixed head and body jets
- Luxury body dryer with remote control to adjust the heat and power to achieve the ideal setting
- Heated towel rail

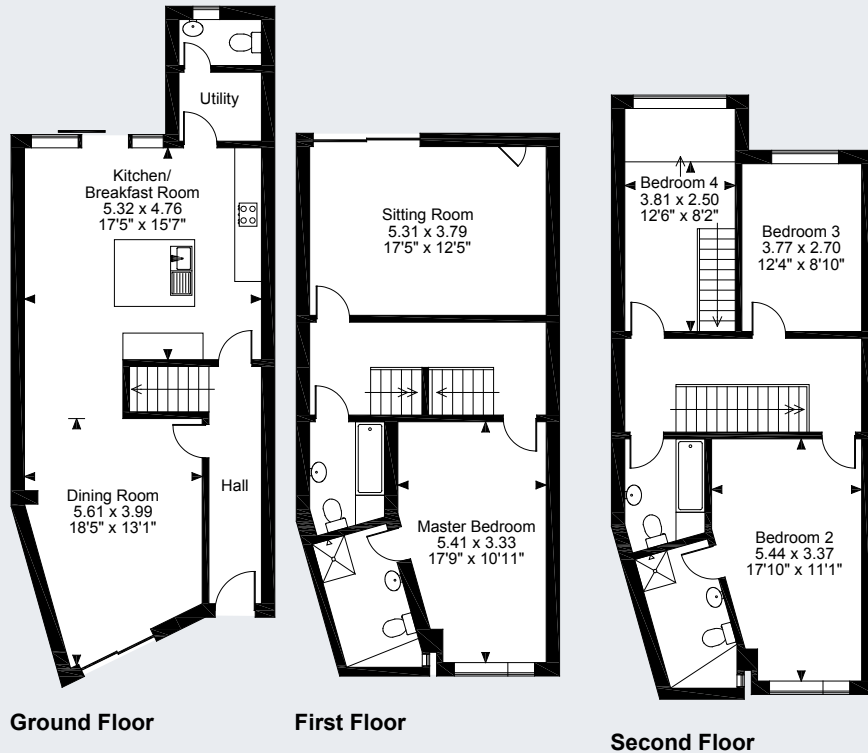


# Peasholme Court, York

Gross internal area (approx.)

210 sq m (2254 sq ft)

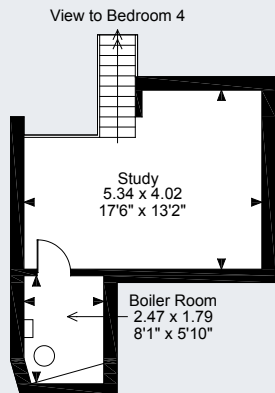
For identification purpose only. Not to scale.  
© ehouse. Drawing ref. dig/8093793/MSS



Ground Floor

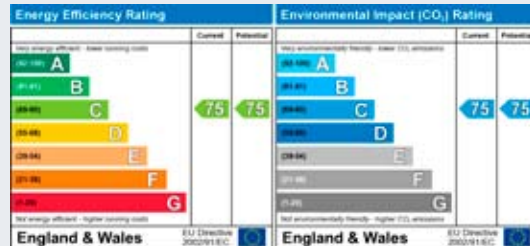
First Floor

Second Floor



Third Floor

## Plot 1

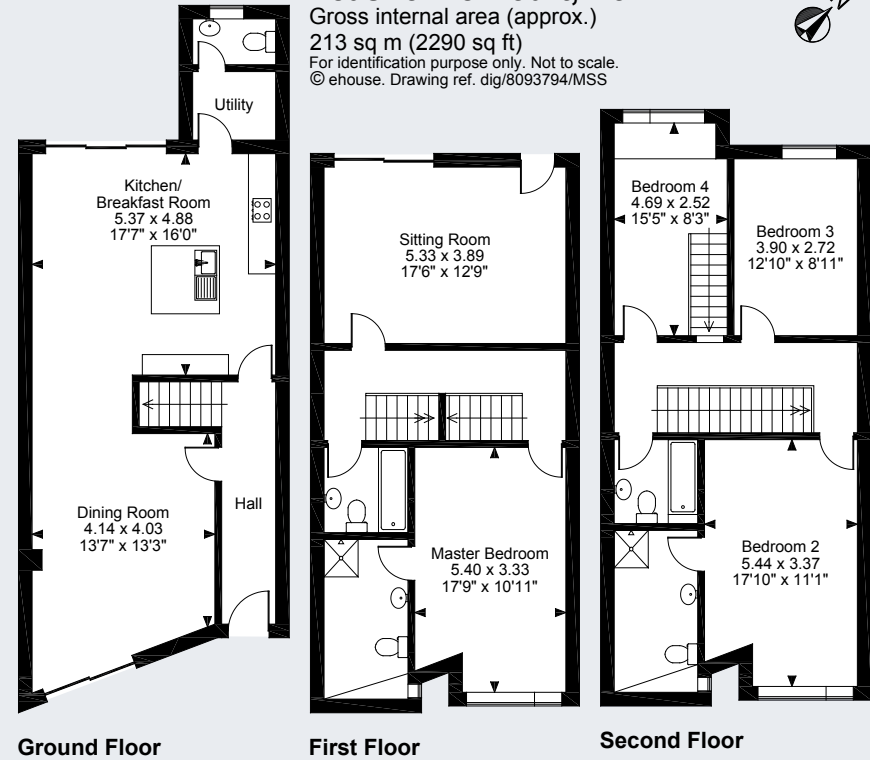


# Peasholme Court, York

Gross internal area (approx.)

213 sq m (2290 sq ft)

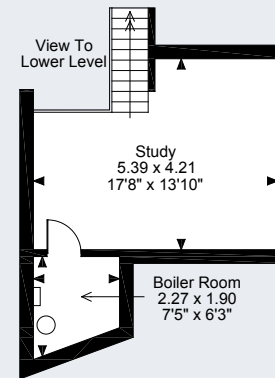
For identification purpose only. Not to scale.  
© ehouse. Drawing ref. dig/8093794/MSS



Ground Floor

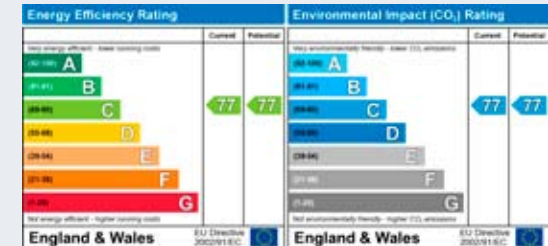
First Floor

Second Floor



Third Floor

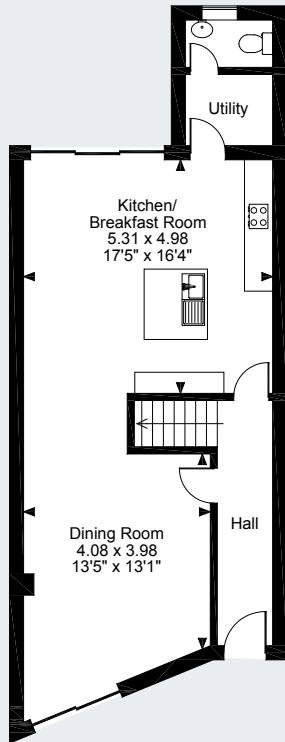
## Plot 2



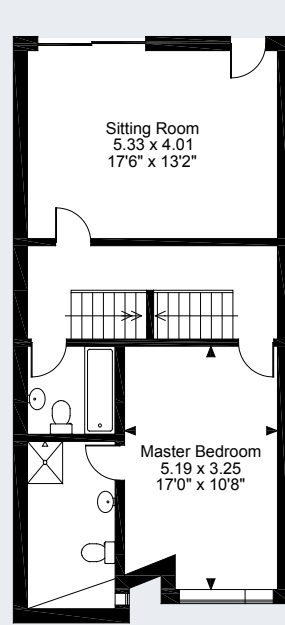
## Peasholme Court, York

Gross internal area (approx.)  
214 sq m (2305 sq ft)

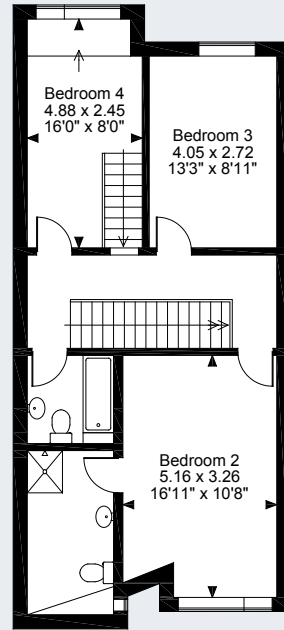
For identification purpose only. Not to scale.  
© ehouse. Drawing ref. dig/8093795/MSS



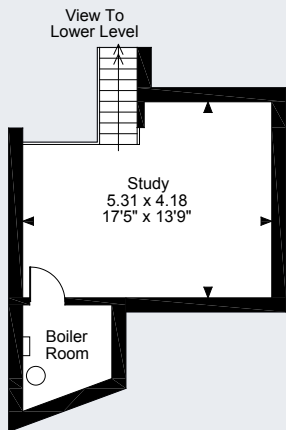
Ground Floor



First Floor

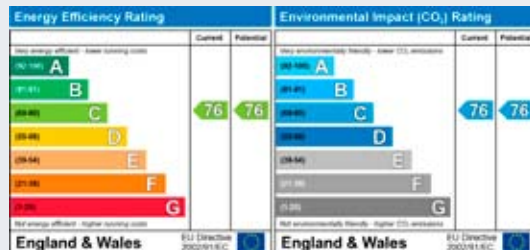


Second Floor



Third Floor

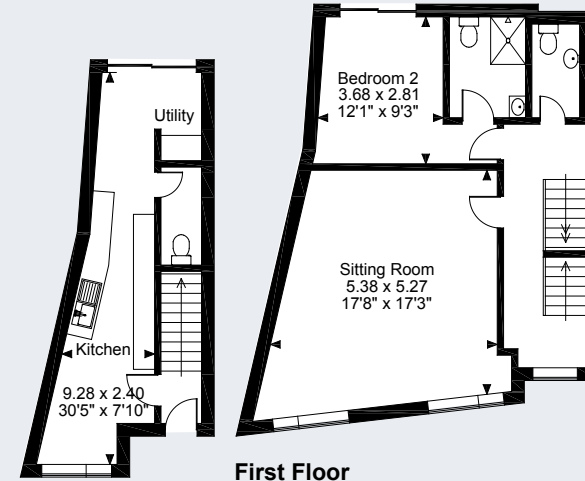
## Plot 3



## Peasholme Court, York

Gross internal area (approx.)  
171 sq m (1845 sq ft)

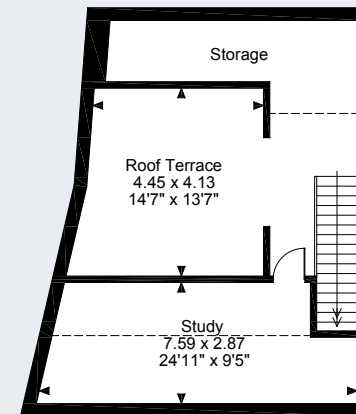
Quoted Area Excludes 'Roof Terrace'  
For identification purpose only. Not to scale.  
© ehouse. Drawing ref. dig/8093796/MSS  
--- Denotes restricted head height



Ground Floor

First Floor

Second Floor



Third Floor

## Plot 4





**Savills York** 13-15 Micklegate, York, YO1 6JH **Contact** Tanya Coffey **Tel** 01904 617820 **Email** [tcoffey@savills.com](mailto:tcoffey@savills.com) **www.savills.com**

**IMPORTANT NOTICE**

Savills, their clients and any joint agents give notice that: 1. They are not authorised to make or give any representations or warranties in relation to the property either here or elsewhere, either on their own behalf or on behalf of their client or otherwise. They assume no responsibility for any statement that may be made in these particulars. These particulars do not form part of any offer or contract and must not be relied upon as statements or representations of fact. 2. Any areas, measurements or distances are approximate. The text, photographs and plans are for guidance only and are not necessarily comprehensive. It should not be assumed that the property has all necessary planning, building regulation or other consents and Savills have not tested any services, equipment or facilities. Purchasers must satisfy themselves by inspection or otherwise. 3. These particulars were prepared from preliminary plans and specifications before the completion of the properties and are intended only as a guide. They may have been changed during construction and final finishes could vary. Prospective purchasers should not rely on this information but must get their solicitor to check the plans and specification attached to their contract.